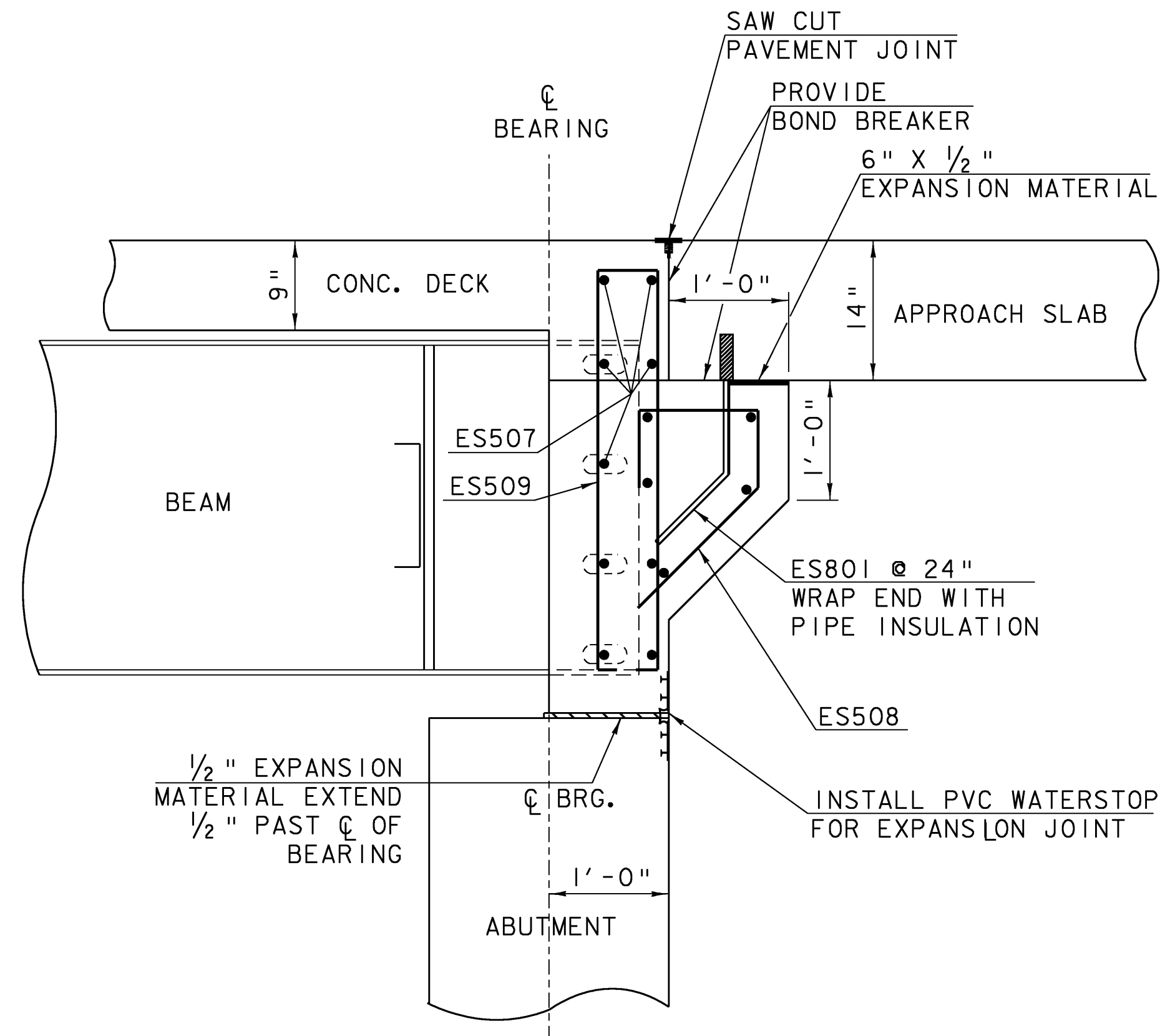


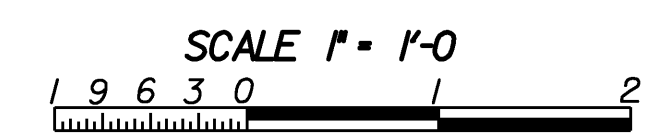
BRIDGE EXPANSION END DETAIL  
ABUTMENT #1

NOTE:  
PAYMENT FOR FURNISHING AND INSTALLING EXPANSION MATERIAL, PIPE INSULATION, BOND BREAKER, AND PVC WATERSTOP WILL BE MADE INCIDENTAL TO THE PAY ITEM FOR ADJACENT CONCRETE.



BRIDGE FIXED END DETAIL  
ABUTMENT #2

NOTE:  
NF = NEAR FACE  
FF = FAR FACE  
EF = EACH FACE  
▲ = CUT TO FIT IN FIELD  
3" CLEAR, UNLESS OTHERWISE SPECIFIED ON THE PLANS.  
2'-2" BAR LAP UNLESS OTHERWISE SPECIFIED ON THE PLANS.



**BRIDGE END DETAILS**

PROJECT NAME:	CANAAN	PLOT DATE:	18-AUG-2008
PROJECT NUMBER:	ER ST 0271(16)	DRAWN BY:	L. DUQUETTE
FILE NAME:	04c098/struc./s04c098sup	CHECKED BY:	S. SCRIBNER
PROJECT LEADER:	M. EVANS-MONGEON	SHEET	40 OF 66